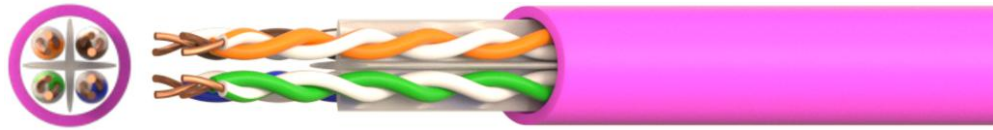


COPPER CABLE



# COPPER CABLE CAT 6A U/UTP 23AWG LSZH – B2ca (s1a,d1,a1)



**Application:**

Primary (Campus), Secondary (Riser), Tertiary (Horizontal), IEEE 802.3an: 10Base-T; 100Base-TX; 1000Base-T, 10Gb, IEEE 802.5 16 MB; ISDN; TPDDI; ATM, IEEE 802.3af-2002: POE; IEEE 802.3at: POE+; conforming to European regulation "CPR" EN 50575

**Construction and characteristics:**

Conductor:	Material	Bare Copper
	AWG Size	23 AWG – 0.57 ±0.01
	Filler	With "+" cross mould separate
Insulation:	Material	HDPE
	Thickness	0,23 mm
	Diameter	Nominal: 1,03±0.08mm x 2C Twist
	Pair colors	Bl/WhBl, Or/WhOr, Gr/WhGr, Br/WhBr
	Unaged Elogation	≥ 7MPa
	Unaged Tensile Strength	≥ 396%
Screen	Material	-
Drain Wire	Material	-
Jacket:	Material	LSZH – CPR B2ca-s1a,d1,a1
	Thickness	Nominal: ≥0.65 mm - Average ≥0.70mm
	Diameter	Nominal: 7.00 ±0.40 mm
	Color	Magenta (RAL-4010)
	Unaged Elogation	≥ 10MPa
	Unaged Tensile Strength	≥ 110%
	Aging al 100°C for 168h	Elogation : 90% Tensile Strength : 9,63
Marking	On cable (black – one per meter)	CABLE U/UTP Cat.6A 500MHz 4PxAWG23 LSZH B2ca - s1a,d1,a1 – 212215-02 - ISO/IEC 11801 ANSI/TIA-568-C.2 <batch no.> <dd/mm/yy> <meter> m

## Reference Standard

ISO/IEC 11801-1:2017(Ed. 1.0) / ISO/IEC 11801-2:2017(Ed. 1.0);	EN 60332-1-2 (Fire Performance)
EN50173-1:2018 / EN 50173-2:2018	EN61034-2 (Smoke Density)
IEC61156-5:2020 (Ed.3.0);	EN60754-2 (Halogen Free)
EN50288-11-1:2012;	EN 50399, EN 50575 (Reaction to fire)
ANSI/TIA-568-D:2018;	CEI UNEL 36762 (C-4 - U <sub>0</sub> =400V)

## Environmental Sustainability

FSC Packaging Supporting responsible forestry	ZWTL-MS-2022 Zero Waste to Landfill Management System
---	---

## Electrical Characteristics and Performance

Frequency (MHz)	ATTENUATION (dB/100m) Max. (Typ.)	NEXT (dB) Min. (Typ.)	PSNEXT (dB) Min. (Typ.)	RETURN LOSS (dB) Min. (Typ.)	ACR-F (dB/100m) Min. (Typ.)	PSACR-F (dB/100m) Min. (Typ.)	ACR-N (dB/100m) Min. (Typ.)	PSACR-N (dB/100m) Min. (Typ.)
1	3,8 (1,7)	75,3 (93,7)	72,3 (91,4)	20,0 (30,9)	68,0 (92,1)	65,0 (89,7)	71,5 (92,0)	68,5 (89,0)
4	3,8 (3,4)	66,3 (85,0)	63,3 (84,0)	23,0 (26,2)	56,0 (83,7)	53,0 (80,2)	62,4 (81,6)	59,5 (78,6)
10	5,9	60,3	57,3	25,0	48,0	45,0	54,4	51,4
16	7,5 (6,7)	57,2 (79,5)	54,2 (76,5)	25,0 (28,7)	43,9 (72,1)	40,9 (69,5)	49,8 (72,8)	46,8 (68,8)
31,25	10,7	52,9	49,9	23,6	38,1	35,1	42,4	39,4
62,5	15,0	48,4	45,4	21,5	32,1	29,1	33,4	30,4
100	19,1 (17,3)	45,3 (67,9)	42,3 (65,9)	20,1 (30,3)	28,0 (52,0)	25,0 (51,0)	26,2 (50,6)	23,2 (47,6)
250	31,1 (27,9)	39,3 (61,1)	36,3 (58,9)	17,3 (22,9)	20,0 (41,8)	17,0 (39,3)	8,3 (33,2)	5,3 (30,2)
500(*)	45,3 (40,5)	34,8 (41,5)	31,8 (38,5)	17,3 (19,8)	14,0 (36,8)	11,0 (35,7)	-10,4 (1,0)	-13,4 (-2,0)




(\*) Data above 500MHz is for reference only.

Max. Conductor DC Resistance at 20°C ( $\Omega$ /Km)	<83
Rated Temperature (°C)	60
Velocity ratio	Approx 68%
Operating Temperature (°C)	-20/70
Impedance ( $\Omega$ )	1-100MHz – (100±15) 100-250MHz – (100±20) 250-500MHz – (100±25)

## Ordering information code

OC-CVR-212215-02 ORCA - COPPER CABLE CAT 6A U/UTP LSZH - B2ca – Magenta (500m)



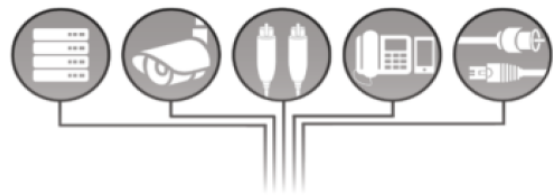
 0200

24 DoP No.24119B EN50575: 2014 OC-CVR-212215-02
<p>Supply of electricity and communications in buildings and other civil engineering works with the objective of limiting the generation and spread of fire and smoke.</p> <p><b>Reaction to Fire: B2ca, s1a, d1, a1</b>          Dangerous Substance: None</p> <div style="text-align: center;">   <a href="http://www.orca.it">www.orca.it</a> </div>

thank you for choosing ORCA Networking



**OC-CVR-212215-02**

Cable Category 6A U/UTP LSZH 500m  
 Cabo Categoria 6A U/UTP LSZH 500m  
 Câble Catégorie 6A U/UTP LSZH 500m  
 Cable Categoria 6A U/UTP LSZH 500m  
 Kabel Kategorie 6A U/UTP LSZH 500m



VERIFIED PERFORMANCES  
 OF ANSI/TIA-568-C.2, ISO/IEC 11801

MADE IN CHINA