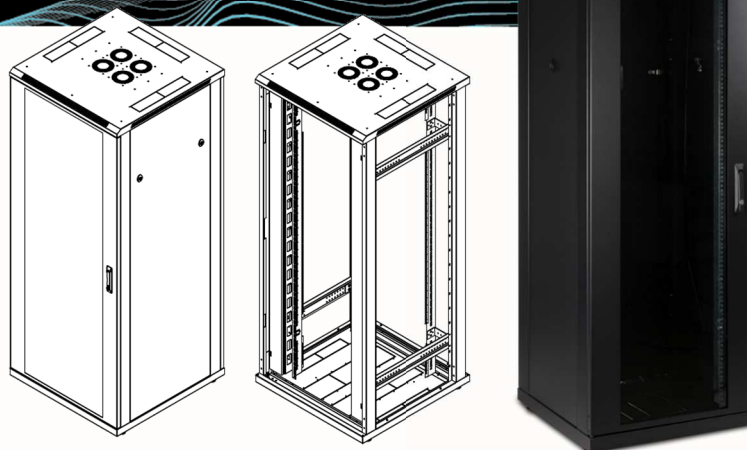


FLOOR RACKS

FLOOR STANDING RACK



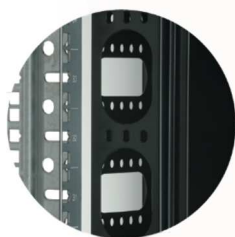
Description

ORCA® Networking floor and wall cabinets are designed and manufactured in compliance with quality and safety standards, optimal solutions for the management and organization of structured cabling.

Orca System offers a range of wall racks with relative accessories.

Rack cabinets are distinguished by their exceptional robustness, which, combined with affordability and simplicity of assembly / disassembly, place them at the top of their category.

U	W(mm) Overall/Useful	D(mm) Overall/Useful	H(mm) Overall/Useful
600x600			
20	600 / 529	600 / 348	978 / 891
24	600 / 529	600 / 348	1155 / 1069
27	600 / 529	600 / 348	1290 / 1203
33	600 / 529	600 / 348	1557 / 1470
42	600 / 529	600 / 348	1957 / 1870
600x800			
27	600 / 529	800 / 548	1290 / 1203
33	600 / 529	800 / 548	1557 / 1470
42	600 / 529	800 / 548	1957 / 1870
47	600 / 529	800 / 548	2179 / 2092
800x800			
\	800 / 729	800 / 548	1557 / 1470
42	800 / 729	800 / 548	1957 / 1870
47	800 / 729	800 / 548	2179 / 2092



vertical cable management



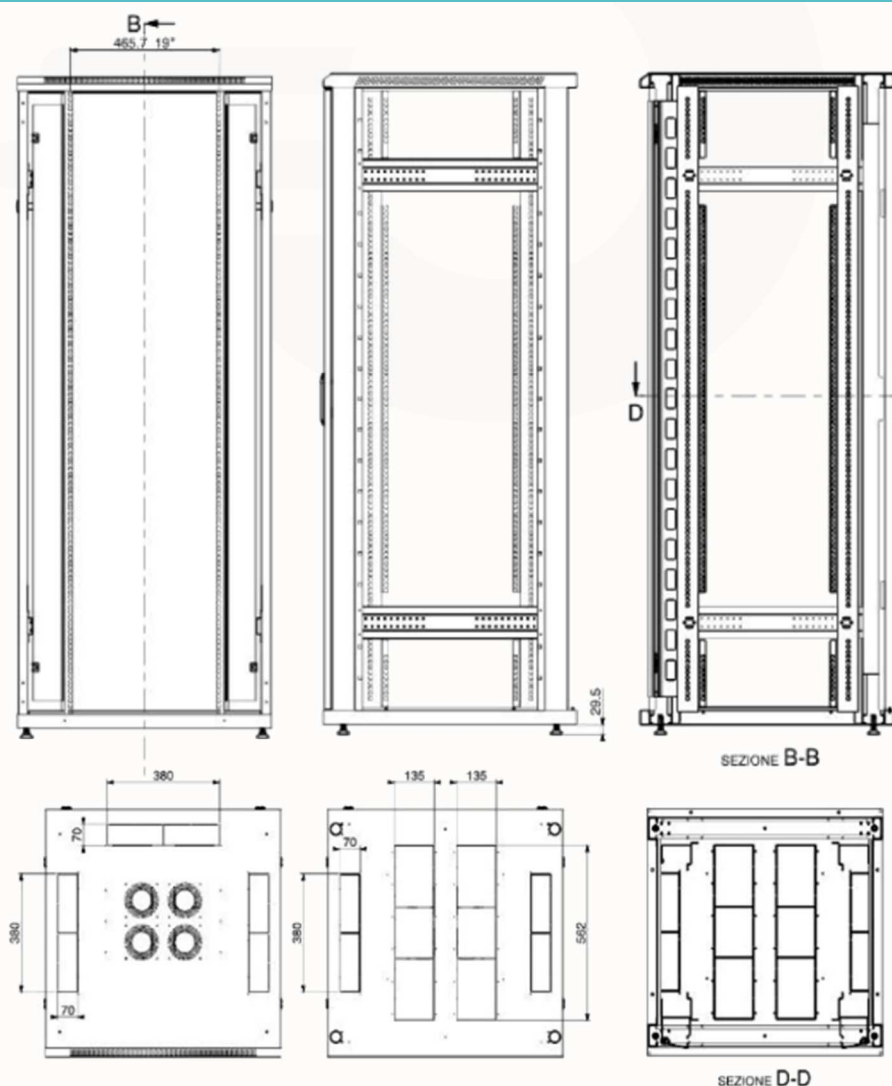
wheels and levelling feet



foldaway handle whit key

General Feature:

Physical	Realized in 15/10 Steel painted.
	Surface finish BLACK RAL 9011.
	Load-bearing frame
	Static load capacity 500Kg.
	Wheels movement load capacity 220Kg.
Front door	IP20 protection degree in according to EN 60529
	Tempered safety glass UNI EN 12150-1
	Reversible, with quick release hinges system.
	With foldaway handle, 2 key supplied.
Roof and floor	Opening 180°
	Roof with predisposition for mounting 2-3-4 fans ventilation unit.
	Passive ventilation slots for the recirculation of hot air.
	Pre-punched space for cable inlet.
Other	Ground kit
	Levelling feet
	Side and rear panels removable with quick release system, ¼ turn lock
	Length 600:
	2 front 19 " in 20/10 galvanized steel side uprights adjustable in depth, pitch 46mm with intermediate pitches of 15,875mm
	Length 800:
Optional	4 front and rear 19 " in 20/10 galvanized steel side uprights adjustable in depth, pitch 46mm with intermediate pitches of 15,875mm and 2 vertical cable management
	Finishing plinth H100mm with removable panels
	Wheels and wheels with brake



Ordering Information code:**600x600**

OC-RAC-572201-20N	ORCA - Floor Standing Rack, 600x600x20U disassemblable, Levelling feet (optional plinth), load capacity 500 kg Black
OC-RAC-572200-24N	ORCA - Floor Standing Rack 600x600x24U, disassemblable, Levelling feet (optional plinth), load capacity 500 kg Black
OC-RAC-572200-27N	ORCA - Floor Standing Rack 600x600x27U, disassemblable, Levelling feet (optional plinth), load capacity 500 kg Black
OC-RAC-572200-33N	ORCA - Floor Standing Rack 600x600x33U, disassemblable, Levelling feet (optional plinth), load capacity 500 kg Black
OC-RAC-572200-42N	ORCA - Floor Standing Rack 600x600x42U, disassemblable, Levelling feet (optional plinth), load capacity 500 kg Black

600x800

OC-RAC-576800-27N	ORCA - Floor Standing Rack 600x800x27U dual side uprights, disassemblable, Levelling feet (optional plinth), load capacity 500 kg Black
OC-RAC-576800-33N	ORCA - Floor Standing Rack 600x800x33U dual side uprights, disassemblable, Levelling feet (optional plinth), load capacity 500 kg Black
OC-RAC-576800-42N	ORCA - Floor Standing Rack 600x800x42U dual side uprights, disassemblable, Levelling feet (optional plinth), load capacity 500 kg Black
OC-RAC-576800-47N	ORCA - Floor Standing Rack 600x800x47U dual side uprights, disassemblable, Levelling feet (optional plinth), load capacity 500 kg Black

800x800

OC-RAC-572700-33N	ORCA - Floor Standing Rack 800x800x33U dual side uprights and vertical cable management, disassemblable, Levelling feet (optional plinth), load capacity 500 kg Black
OC-RAC-572700-42N	ORCA - Floor Standing Rack 800x800x42U dual side uprights and vertical cable management, disassemblable, Levelling feet (optional plinth), load capacity 500 kg Black
OC-RAC-572700-47N	ORCA - Floor Standing Rack 800x800x47U dual side uprights and vertical cable management, disassemblable, Levelling feet (optional plinth), load capacity 500 kg Black

