

COPPER CABLE



# COPPER CABLE CAT 6A U/UTP ALIEN NEXT PROOF 23AWG LSZH – Dca



**Application:**

Primary (Campus), Secondary (Riser), Tertiary (Horizontal), IEEE 802.3an: 10Base-T; 100Base-TX; 1000Base-T, 10Gb, IEEE 802.5 16 MB; ISDN; TPDDI; ATM, IEEE 802.3af-2002: POE; IEEE 802.3at: POE+; conforming to European regulation "CPR" EN 50575

**Construction and characteristics:**

Conductor:	Material	Bare Copper
	AWG Size	23 AWG – 0.57 ±0.01
	Filler	With "+" cross mould separate
Insulation:	Material	HDPE
	Thickness	Nominal: 0.29 mm
	Diameter	Nominal: 1.11 ±0.08mm x 2C Twist
	Pair colors	Bl/WhBl, Or/WhOr, Gr/WhGr, Br/WhBr
	Unaged Elongation	-
	Unaged Tensile Strength	-
Alien Next Proof	Material	Mylar Spiral and Segmented Al-PET ≥125%
Drain Wire	Material	-
	Material	LSZH – CPR Dca (s2,d2,a1)
Jacket:	Thickness	Nominal: 0.55 mm
	Diameter	Nominal: 7.40 ±0.30 mm
	Colour	Orange (RAL-2009)
	Unaged Elongation	-
	Unaged Tensile Strength	-
	Aging at 100°C for 168h	-
	Marking	On cable (black – one per meter)

### Reference Standard

ISO/IEC 11801-1:2017(Ed. 1.0) / ISO/IEC 11801-2:2017(Ed. 1.0);	EN 60332-1-2 (Fire Performance)
EN 50173-1:2018 / EN 50173-2:2018;	EN 61034-2 (Smoke Density)
IEC 61156-5:2020 (Ed. 3.0);	EN 60754-2 (Halogen Free)
EN 50288-10-1:2012;	EN 50399, EN 50575 (Reaction to fire)
ANSI/TIA-568.2-D:2018;	

### Environmental Sustainability

FSC Packaging Supporting responsible forestry      ZWTL-MS-2022 Zero Waste to Landfill Management System

### Electrical Characteristics and Performance

Frequency (MHz)	Attenuation (dB/100m) Max.	NEXT (dB) Min.	PSNEXT (dB) Min.	Return loss (dB) Min.	ACR-F (dB/100m) Min.	PSACR-F (dB/100m) Min.	ACR-N (dB/100m) Min.	PSACR-N (dB/100m) Min.
4,0	3,8	66,3	63,3	23,0	56,0	53,0	62,5	59,5
10,0	5,9	60,3	57,3	25,0	48,0	45,0	54,4	51,4
16,0	7,5	57,2	54,2	25,0	43,9	40,9	49,8	46,8
31,25	10,5	52,9	49,9	23,6	38,1	35,1	42,4	39,4
62,5	15,0	48,4	45,4	21,5	32,1	29,1	33,4	30,4
100,0	19,1	45,3	42,3	20,1	28,0	25,0	26,2	23,2
250,0	31,1	39,3	36,3	17,3	20,0	17,0	8,3	5,3
500,0(*)	45,3	34,8	31,8	17,3	14,0	11,0	-10,4	-13,4

(\*) Data above 500MHz is for reference only.

Max. Conductor DC Resistance at 20°C (Ω/Km)	<83
Rated Temperature(°C)	60
Velocity ratio	Approx 68,2%
Operating Temperature(°C)	-25/70
Impedance (Ω)	1-100MHz – (100±15)
	100-250MHz – (100±20)
	250-500MHz – (100±25)

### Ordering information code

OC-CVR-212215-22      ORCA - COPPER CABLE CAT 6A U/UTP LSZH - Dca - Orange

CE  
1014

**orca**<sup>®</sup>

18  
DoP No. 180076  
EN50575: 2014  
OC-CVR-212215-22

Supply of electricity and communications in buildings and other civil engineering works with the objective of limiting the generation and spread of fire and smoke.

Reaction to Fire: Dca, s2, d2, a1  
Dangerous Substance: None

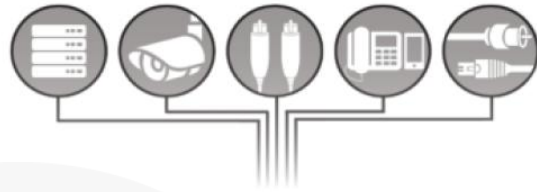


[www.orca.it](http://www.orca.it)



OC-CVR-212215-22

Cable Category 6A UTP LSZH 500m  
Cavo Categoria 6A UTP LSZH 500m  
Câble Catégorie 6A UTP LSZH 500m  
Cable Categoria 6A UTP LSZH 500m  
Kabel Kategorie 6A UTP LSZH 500m



VERIFIED PERFORMANCES  
OF ANSI/TIA-568-C.2, ISO/IEC 11801

MADE IN CHINA

thank you for choosing ORCA Networking