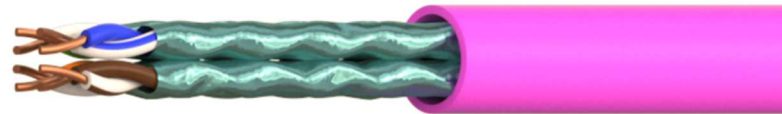


COPPER CABLE



COPPER CABLE CAT 6A U/FTP

23AWG LSZH - B2ca



Application:

Primary (Campus), Secondary (Riser), Tertiary (Horizontal), IEEE 802.3an: 10Base-T; 100Base-TX; 1000Base-T, 10GB, IEEE 802.5 16 MB; ISDN; TPDDI; ATM, IEEE 802.3af-2002: POE; IEEE 802.3at: POE+; conforming to European regulation "CPR" EN 50575

Construction and characteristics:

Conductor:	Material	Bare Copper
	AWG Size	23 AWG – 0.56 ±0.01mm
	Filler	With "+" cross mould separate
Insulation:	Material	Skin Foam PE-Skin
	Thickness	Nominal: 0.395 mm
	Diameter	Nominal: 1.35 ±0.10mm x 2C Twist
	Pair colors	Bl/WhBl, Or/WhOr, Gr/WhGr, Br/WhBr
	Unaged Elongation	-
	Unaged Tensile Strength	-
Screen	Material	Al-PET shield on each pair ≥115%
Drain Wire	Material	Tinned copper T0.40 ±0.008
	Material	LSZH – CPR B2ca (s1a,d1,a1)
Jacket:	Thickness	Nominal: ≥0.65 mm - Average ≥0.70mm
	Diameter	Nominal: 7.60 ±0.40 mm
	Colour	Magenta (RAL-4010)
	Unaged Elongation	-
	Unaged Tensile Strength	-
	Aging at 100°C for 168h	-
	Marking	On cable (black – one per meter)

Reference Standard

ISO/IEC 11801-1:2017(Ed. 1.0) / ISO/IEC 11801-2:2017(Ed. 1.0);	EN 60332-1-2 (Fire Performance)
EN50173-1:2011 / EN 50173-2:2007 including amendment A1:2010;	EN61034-2 (Smoke Density)
IEC61156-5:2012 (Ed.2.1);	EN60754-2 (Halogen Free)
EN50288-10-1:2012;	EN 50399, EN 50575 (Reaction to fire)
ANSI/TIA-568-C.2:2009;	CEI UNEL 36762 (C-4 - Uo=400V)

Electrical Characteristics and Performance

Frequency (MHz)	ATTENUATION (dB/100m) Max.	NEXT (dB) Min.	PSNEXT (dB) Min.	RETURN LOSS (dB) Min.	ELFEXT (dB/100m) Min.	PSELFEXT (dB/100m) Min.
4,0	3,8	66,3	63,3	23,0	56,0	53,0
10,0	5,90	60,3	57,3	25,0	48,0	45,0
16,0	7,5	57,2	54,2	25,0	43,9	40,9
31,3	10,5	52,9	49,9	23,6	38,1	35,1
62,5	15,0	48,4	45,4	21,5	32,1	29,1
100,0	19,1	45,3	42,3	20,1	28,0	25,0
250,0	31,1	39,3	36,3	17,3	20,0	17,0
500,0 (*)	45,3	34,8	31,8	17,3	14,0	11,0

(*) Data above 500MHz is for reference only.

Max. Conductor DC Resistance at 20°C (Ω /Km)

<86

Rated Temperature(°C)

60

Velocity ratio

75%

Operating Temperature(°C)

-25/70

Impedance (Ω)

1-100MHz – (100±15)

100-250MHz – (100±20)

250-500MHz – (100±25)

Ordering information code

OC-CVR-212214-22

COPPER CABLE CAT 6A U/FTP LSZH - B2ca - Magenta

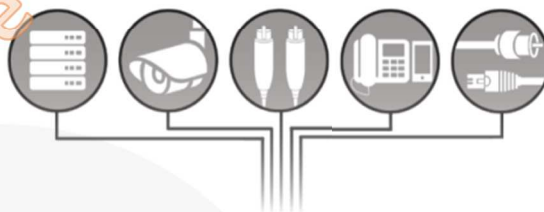
 0200

18 DoP No. 18116AB EN50575: 2014 OC-CVR-212214-22
<p>Supply of electricity and communications in buildings and other civil engineering works with the objective of limiting the generation and spread of fire and smoke.</p> <p>Reaction to Fire: B2ca, s1a, d1, a1 Dangerous Substance: None</p> <div style="text-align: center;">  www.orca.it </div>

OC-CVR-212214-22

Cable Category 6A UFTP LSZH 500m
 Cavo Categoria 6A UFTP LSZH 500m
 Câble Catégorie 6A UFTP LSZH 500m
 Cable Categoria 6A UFTP LSZH 500m
 Kabel Kategorie 6A UFTP LSZH 500m

thank you for choosing ORCA Networking



VERIFIED PERFORMANCES
 OF ANSI/TIA-568-C.2, ISO/IEC 11801