

COPPER CABLE



COPPER CABLE CAT 6 U/UTP 24AWG LSZH – B2ca (s1a,d1,a1)



Application:

Primary (Campus), Secondary (Riser), Tertiary (Horizontal), IEEE 802.3an: 10Base-T; 100Base-TX; 1000Base-T, IEEE 802.5 16 MB; ISDN; TPDDI; ATM, IEEE 802.3af-2002: POE; IEEE 802.3at: POE+; conforming to European regulation "CPR" EN 50575

Construction and characteristics:

Conductor:	Material	Bare Copper
	AWG Size	24 AWG – 0.52 ±0.01
	Filler	With "+" cross mould separate
Insulation:	Material	HDPE
	Thickness	Blue/Green 0.245mm - Orange/Brown 0.225mm
	Diameter	Nominal: 0.93 ±0.05mm x 2C Twist
	Pair colors	Bl/WhBl, Or/WhOr, Gr/WhGr, Br/WhBr
	Unaged Elogation	-
	Unaged Tensile Strength	-
Screen	Material	-
Drain Wire	Material	-
Jacket:	Material	LSZH – CPR B2ca-s1a,d1,a1
	Thickness	Nominal: ≥0.65 mm - Average ≥0.70mm
	Diameter	Nominal: 6.20 ±0.30 mm
	Color	Magenta (RAL-4010)
	Unaged Elogation	-
	Unaged Tensile Strength	-
Marking	Aging at 100°C for 168h	-
	On cable (black – one per meter)	CABLE U/UTP Cat.6 250MHz 4PxAWG24 LSZH B2ca - s1a,d1,a1 – 212013-52 - ISO/IEC 11801 ANSI/TIA-568-C.2 <batch no.> <dd/mm/yy> <meter> m

Reference Standard

ISO/IEC 11801-1:2017(Ed. 1.0) / ISO/IEC 11801-2:2017(Ed. 1.0);	EN 60332-1-2 (Fire Performance)
EN50173-1:2018 / EN 50173-2:2018	EN61034-2 (Smoke Density)
IEC61156-5:2020 (Ed. 3.0);	EN60754-2 (Halogen Free)
EN50288-6-1:2013;	EN 50399, EN 50575 (Reaction to fire)
ANSI/TIA-568-D:2018;	CEI UNEL 36762 (C-4 - U ₀ =400V)

Environmental Sustainability

FSC Packaging Supporting responsible forestry	ZWTL-MS-2022 Zero Waste to Landfill Management System
---	---

Electrical Characteristics and Performance




Frequency	ATTENUATION	NEXT	PSNEXT	RETURN LOSS	ACR-F	PSACR-F	ACR-N	PSACR-N
(MHz)	(dB/100m) Max.	(dB) Min.	(dB) Min.	(dB) Min.	(dB/100m) Min.	(dB/100m) Min.	(dB/100m) Min.	(dB/100m) Min.
4	3,8	66,3	63,3	23,0	56,0	53,0	62,4	59,4
10	6,0	60,3	57,3	25,0	48,0	45,0	54,3	51,3
16	7,6	57,2	54,2	25,0	43,9	40,9	49,6	46,6
20	8,5	55,8	52,8	25,0	42,0	39,0	47,3	44,3
31,25	10,7	52,9	49,9	23,6	38,1	35,1	42,1	39,1
62,5	15,5	48,4	45,4	21,5	32,1	29,1	32,9	29,9
100	19,9	45,3	42,3	20,1	28,0	25,0	25,4	22,4
155	25,3	42,4	39,4	18,8	24,2	21,2	17,1	14,1
175	27,1	41,7	38,7	18,4	23,1	20,1	14,6	11,6
200	29,1	40,8	37,8	18,0	22,0	19,0	11,6	8,6
250(*)	33,0	39,3	36,3	17,3	20,0	17,0	6,3	3,3

(*) Data above 250MHz is for reference only.

Max. Conductor DC Resistance at 20°C (Ω /Km)	<98
Rated Temperature (°C)	60
Velocity ratio	Approx 68%
Operating Temperature (°C)	-20/70
Impedance (Ω)	1-100MHz – (100 \pm 15) 100-250MHz – (100 \pm 20)

Ordering information code

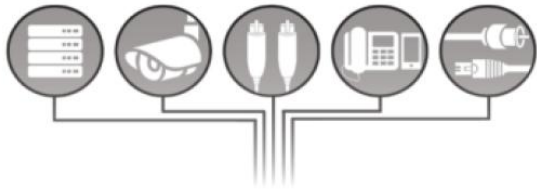
OC-CVR-212013-52 ORCA - COPPER CABLE CAT 6 U/UTP LSZH - B2ca - Magenta

 0200 Identification Number

18 DoP No. 18116B EN50575: 2014 OC-CVR-212013-52
Supply of electricity and communications in buildings and other civil engineering works with the objective of limiting the generation and spread of fire and smoke. Reaction to Fire: B2ca, s1a, d1, a1 Dangerous Substance: None  www.orca.it

thank you for choosing ORCA Networking



Cable Category 6 UTP LSZH 305m
 Cavo Categoria 6 UTP LSZH 305m
 Câble Catégorie 6 UTP LSZH 305m
 Cable Categoria 6 UTP LSZH 305m
 Kabel Kategorie 6 UTP LSZH 305m



VERIFIED PERFORMANCES
 OF ANSI/TIA-568-C.2, ISO/IEC 11801

MADE IN CHINA