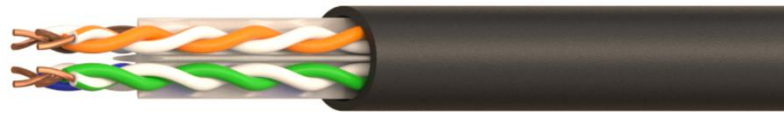


COPPER CABLE



# OUTDOOR COPPER CABLE CAT 6 UTP 24AWG PE - Fca



**Application:**

Outdoor application; Primary (Campus), Secondary (Riser), Tertiary (Horizontal), IEEE 802.3an: 10Base-T; 100Base-TX; 1000Base-T, IEEE 802.5 16 MB; ISDN; TPDDI; ATM, IEEE 802.3af-2002: POE; IEEE 802.3at: POE+;

**Construction and characteristics:**

Conductor:	Material	Bare Copper
	AWG Size	24 AWG – 0.52 ±0.01
	Filler	With "+" cross mould separate
Insulation:	Material	HDPE
	Thickness	-
	Diameter	Nominal: 0.92 ±0.08mm x 2C Twist
	Pair colors	Bl/WhBl, Or/WhOr, Gr/WhGr, Br/WhBr
	Unaged Elogation	-
	Unaged Tensile Strength	-
Screen	Material	-
Drain Wire	Material	-
Jacket:	Material	PE – CPR Fca
	Thickness	-
	Diameter	Nominal: 5.60 ±0.30 mm
	Color	Black
	Unaged Elogation	-
	Unaged Tensile Strength	-
	Aging al 100°C for 168h	-
Marking	On cable (black – one per meter)	CABLE U/UTP Cat.6 250MHz 4PxAWG24 PE Fca – 211213-05 - ISO/IEC 11801 ANSI/TIA-568-C.2 - CEI UNEL 36762 (C-4 - Uo=400V) <batch no.> <dd/mm/yy> <meter> m

### Reference Standard

ISO/IEC 11801-1:2017(Ed. 1.0) / ISO/IEC 11801-2:2017(Ed. 1.0);

EN 50173-1:2018 / EN 50173-2:2018

IEC 61156-5:2020 (Ed. 3.0);

EN 50288-6-1:2013;

TIA-568.2-D:2018;

CEI UNEL 36762 (C-4 - U<sub>0</sub>=400V)

### Environmental Sustainability

FSC Packaging Supporting responsible forestry

ZWTL-MS-2022 Zero Waste to Landfill Management System

### Electrical Characteristics and Performance

Freq. (MHz)	Attenuation (dB/100m) Max.	NEXT (dB) Min.	PSNEXT (dB) Min.	Ret. Loss (dB) Min.	ACR-F (dB/100m) Min.	PSACR-F (dB/100m) Min.	ACR-N (dB/100m) Min.	PSACR-N (dB/100m) Min.
4	3,8	66,3	63,3	23,0	56,0	53,0	62,4	59,4
10	6,0	60,3	57,3	25,0	48,0	45,0	54,3	51,3
16	7,6	57,2	54,2	25,0	43,9	40,9	49,6	46,6
20	8,5	55,8	52,8	25,0	42,0	39,0	47,3	44,3
31,25	10,7	52,9	49,9	23,6	38,1	35,1	42,1	39,1
62,5	15,5	48,4	45,4	21,5	32,1	29,1	32,9	29,9
100	19,9	45,3	42,3	20,1	28,0	25,0	24,4	22,4
155	25,3	42,4	39,4	18,8	24,2	21,2	17,1	14,1
175	27,1	41,7	38,7	18,4	23,1	20,1	14,6	11,6
200	29,1	40,8	37,8	18,0	22,0	19,0	11,6	8,6
250 (*)	33,0	39,3	36,3	17,3	20,0	17,0	6,3	3,3

(\*) Data above 250MHz is for reference only.

Max.Conductor DC Resistance at 20°C (Ω/Km)

<97.6

Rated Temperature(°C)

-40 to +70

Velocity ratio

approx 68%

Impedance(Ω)

1-100MHz – (100±15)

100-250MHz – (100±20)

### Ordering information code

OC-CVR-211213-05

ORCA - COPPER CABLE CAT 6 U/UTP PE – Fca - Black



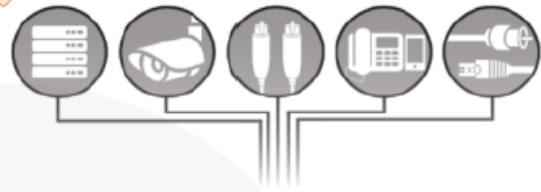
<p>19 DoP No. 190017 EN50575: 2014 OC-CVR-211213-05</p>
<p>Supply of electricity and communications in buildings and other civil engineering works with the objective of limiting the generation and spread of fire and smoke.</p> <p><b>Reaction to Fire: Fca</b> Dangerous Substance: None</p> <div style="text-align: center;">   <a href="http://www.orca.it">www.orca.it</a> </div>



OC-CVR-211213-05

Cable Category 6 UTP PE 500m  
 Cavo Categoria 6 UTP PE 500m  
 Câble Catégorie 6 UTP PE 500m  
 Cable Categoria 6 UTP PE 500m  
 Kabel Kategorie 6 UTP PE 500m

thank you for choosing ORCA Networking



VERIFIED PERFORMANCES  
 OF ANSI/TIA-568-C.2, ISO/IEC 11801

MADE IN CHINA