

COPPER CABLE



# COPPER CABLE CAT 6 UTP 24AWG PVC/PE - Fca



**Application:**

Primary (Campus), Secondary (Riser), Tertiary (Horizontal), IEEE 802.3an: 10Base-T; 100Base-TX; 1000Base-T, IEEE 802.5 16 MB; ISDN; TPDDI; ATM, IEEE 802.3af-2002: POE; IEEE 802.3at: POE+; conforming to European regulation "CPR" EN 50575

**Construction and characteristics:**

Conductor:	Material	Bare Copper
	AWG Size	24 AWG – 0.54 ±0.01
	Filler	With "+" cross mould separate
Insulation:	Material	HDPE
	Thickness	-
	Diameter	Nominal: 0.98 ±0.08mm x 2C Twist
	Pair colors	Bl/WhBl, Or/WhOr, Gr/WhGr, Br/WhBr
	Unaged Elongation	-
	Unaged Tensile Strength	-
Screen	Material	-
Drain Wire	Material	-
Jacket:	Material	Inner: PVC / Outer: PE – CPR Fca
	Thickness	-
	Diameter	Nominal; Inner: 5.80 ±0.20 mm / Outer: 7.40 ±0.25 mm
	Color	Inner: Gray (RAL-7044 / Outer: Black)
	Unaged Elongation	-
	Unaged Tensile Strength	-
	Aging at 100°C for 168h	-
Marking	On cable (black – one per meter)	CABLE U/UTP Cat.6 250MHz 4PxAWG24 PVC/PE OUTDOOR Fca – 211213-04 - ISO/IEC 11801 ANSI/TIA-568-C.2 - CEI UNEL 36762 (C-4 - Uo=400V) - <batch no.> <dd/mm/yy> <meter> m

## Reference Standard

ISO/IEC 11801-1:2017(Ed. 1.0) / ISO/IEC 11801-2:2017(Ed. 1.0);

EN 50173-1:2018 / EN 50173-2:2018

IEC 61156-5:2012 (Ed.2.1);

EN 50288

TIA-568.2-D:2018;

CEI UNEL 36762 (C-4 - U<sub>0</sub>=400V)

## Electrical Characteristics and Performance

Freq. (MHz)	Attenuation (dB/100m) Max.	NEXT (dB) Min.	PSNEXT (dB) Min.	Ret. Loss (dB) Min.	ACR-F (dB/100m) Min.	PSACR-F (dB/100m) Min.	ACR-N (dB/100m) Min.	PSACR-N (dB/100m) Min.
4	3,8	66,3	63,3	23,0	56,0	53,0	62,4	59,4
10	6,0	60,3	57,3	25,0	48,0	45,0	54,3	51,3
16	7,6	57,2	54,2	25,0	43,9	40,9	49,6	46,6
20	8,5	55,8	52,8	25,0	42,0	39,0	47,3	44,3
31,25	10,7	52,9	49,9	23,6	38,1	35,1	42,1	39,1
62,5	15,5	48,4	45,4	21,5	32,1	29,1	32,9	29,9
100	19,9	45,3	42,3	20,1	28,0	25,0	24,4	22,4
155	25,3	42,4	39,4	18,8	24,2	21,2	17,1	14,1
175	27,1	41,7	38,7	18,4	23,1	20,1	14,6	11,6
200	29,1	40,8	37,8	18,0	22,0	19,0	11,6	8,6
250 (*)	33,0	39,3	36,3	17,3	20,0	17,0	6,3	3,3

(\*) Data above 250MHz is for reference only.

Max. Conductor DC Resistance at 20°C (Ω/Km): <91.3

Rated Temperature (°C): 60

Velocity ratio: 70%

Temperature range (°C): -40°/70° double sheat; -20°/70° single sheat;

Impedance(Ω) 1-100MHz – (100±15)

100-250MHz – (100±20)

Sheath test voltage - 2.0 kVdc

Test method according to CEI UNEL 36762 with cable immersed in water for five minutes

## Ordering information code

OC-CVR-211213-04

ORCA - COPPER CABLE CAT 6 U/UTP PVC/PE – Fca – Gray/Black

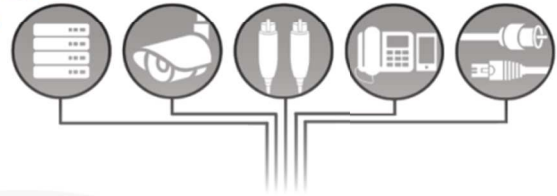


<b>CE</b>
<b>orca®</b>
19 DoP No. 190019 EN50575: 2014 OC-CVR-211213-04
<p>Supply of electricity and communications in buildings and other civil engineering works with the objective of limiting the generation and spread of fire and smoke.</p> <p><b>Reaction to Fire: Fca</b> <b>Dangerous Substance: None</b></p>  <p><a href="http://www.orca.it">www.orca.it</a></p>

# OC-CVR-211213-04

Cable Category 6 UTP PVC-PE 500m  
 Cavo Categoria 6 UTP PVC-PE 500m  
 Câble Catégorie 6 UTP PVC-PE 500m  
 Cable Categoria 6 UTP PVC-PE 500m  
 Kabel Kategorie 6 UTP PVC-PE 500m

thank you for choosing ORCA Networking



VERIFIED PERFORMANCES  
 OF ANSI/TIA-568-C.2, ISO/IEC 11801